

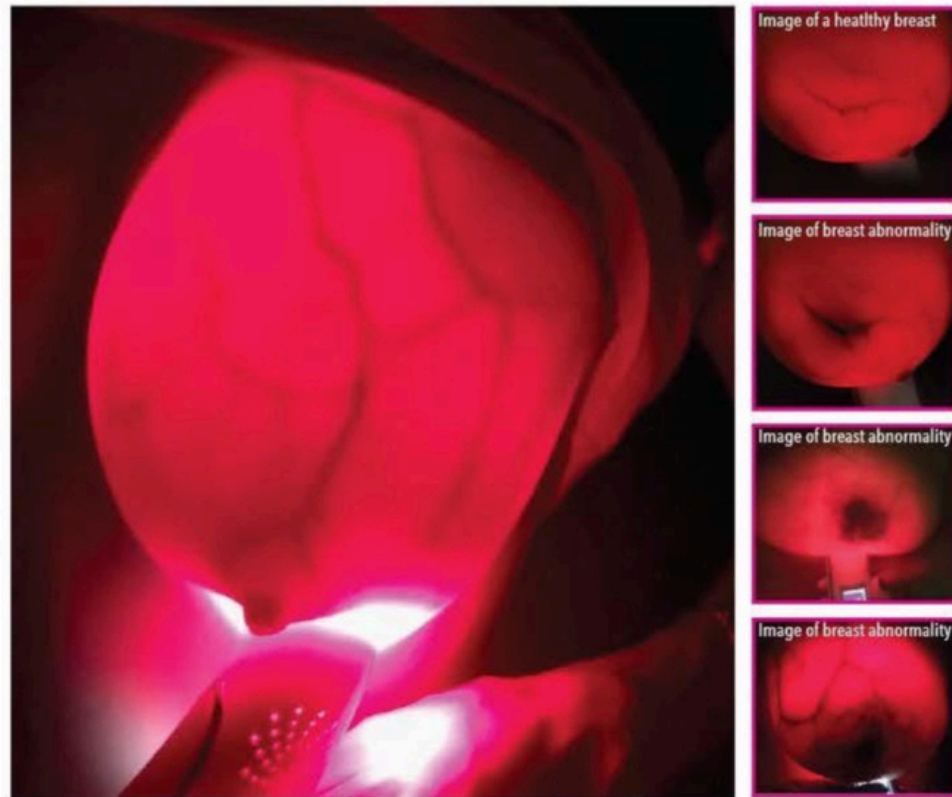


PATENTED RED LED LIGHT TECHNOLOGY FROM 620 - 800 NANNOMETERS

This technology illuminates soft tissue and blood flow in the breast, establishing a specific baseline for the user that they may identify changes or potential abnormalities.

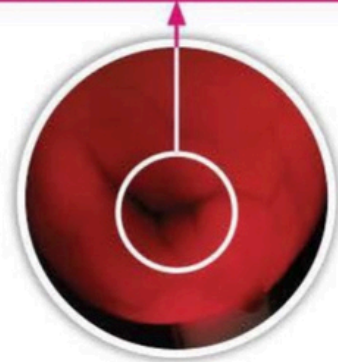
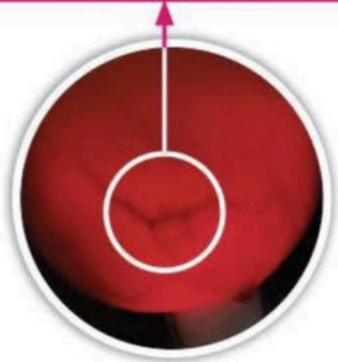
Areas characterized by visual darkness or shadows may indicate possible anomalies.

Breast transillumination is a non-invasive technique that enables the visualization of the venous flow/pattern in the breasts using a no risk Class 1 medical device.



Images of a healthy breast

Images of a breast with abnormalities



Luminous Pro-Series

Is a LED red patented technology that adheres to breast tissue, absorbing hemoglobin.

Objective of the Breast exam with Luminous Pro-Series

To complement the clinical breast examination conducted by the healthcare users, as a tool to clinical breast examination (patology).

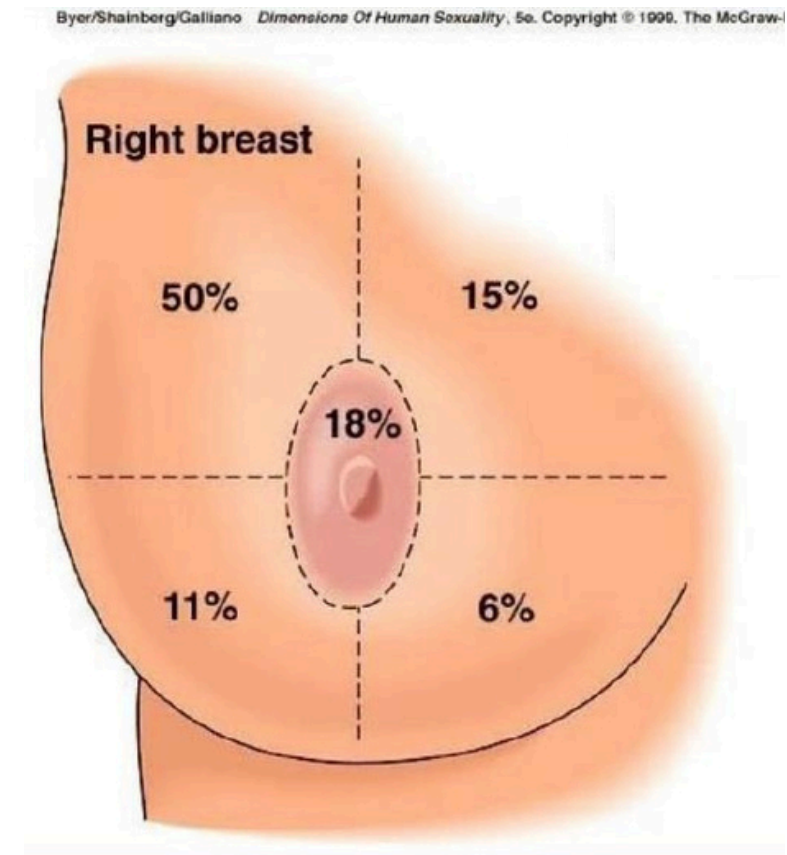
Testing Location:

The screening should be performed in a dark room where no sunlight or artificial light can enter. The user should be standing.



User Instructions

- For medical professionals begin with the user positioned standing with her hands behind her head (at the nape) similar to the CBE (Clinical Breast Examination).
- For individual users begin standing up in front of a mirror. Start at the upper outer quadrant and screen down to the tail of spencer the axillary end of lymph nodes.
- Next, we will screen the upper inner quadrant, followed by the Lower Inner and outer quadrants. In layman's words, the user will screen the soft tissue of the breast in all four quadrants as stated and shown above. In addition to the breast as a whole including the axilas as an adjunct tool to be used in conjunction with CBE.
- Finally, the Luminous / Luminous Pro-Series device is placed beneath the nipple, providing a comprehensive view of the breasts.
- Then moved to the next breast.



Results

- Breasts without new blood vessels will appear as bright red light with regular blood vessels.
- Breasts with any irregularity will show dark spots, that may show up as a spot or a shadow.
- In addition if one breast does not transilluminate at all and the other breast does. This is also a cause for further testing.
- It is recommended that any user presenting the above issues and on abnormal venous patterns be referred for an eco, ultrasound and/or mammography.



INSTRUCTIONS FOR USE BY THE HEALTH PROFESSIONAL

- We begin with the Upper Outer Quadrant and sift down to Spencer's tail (axillary end).
- Next, we sift the Upper Inner Quadrant, moving down to the Lower Inner and Outer Quadrants.
- We finish by placing the Luminous Pro-Series under the nipple, giving us a complete view of the breasts.

RESULTS

- Breasts without angiogenesis will appear as a bright red light with regular blood vessels.
- Breasts with suspected pathology will appear with irregular dark spots.
- Preclinical Diagnosis.
- Any patient with any abnormal venous pattern should be referred for ultrasound and/or mammography.

ADDITIONAL INFORMATION

VISIT

HOW TO USE LUMINOUS

VISIT

VISIT OUR WEBSITE

VISIT

TESTIMONIAL VIDEOS

VISIT

DR. RAMONA PROBASCO TESTIMONIAL VIDEO

VISIT

**VIDEOS SHOWING IRREGULAR VENOUS FLOW...
VASCULARITY... ANDIOGENESIS...**