

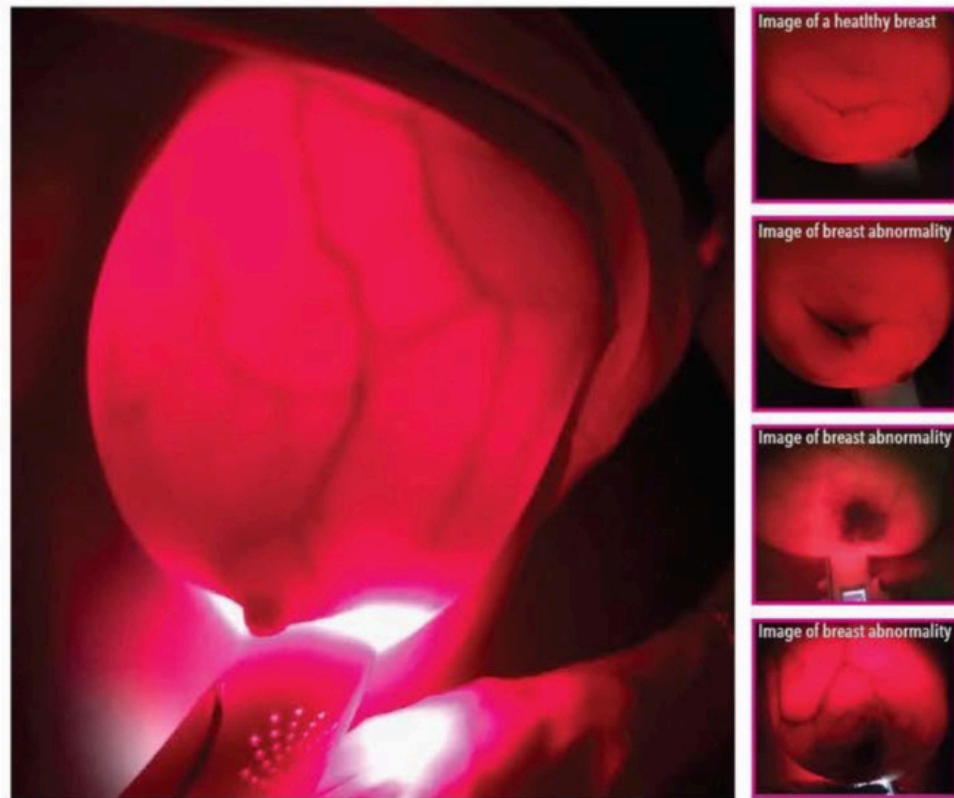
Luminous Pro-Series

PATENTED RED LED TECHNOLOGY

This technology illuminates soft tissue and blood flow in the breast, establishing a specific baseline for the patient to identify changes or potential abnormalities.

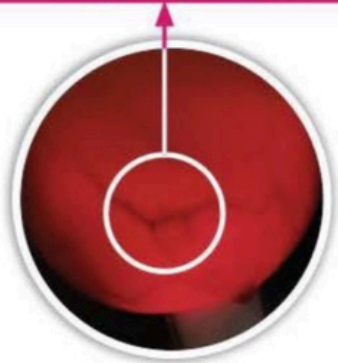
Areas characterized by visual darkness or shadows may indicate possible anomalies.

Breast transillumination is a non-invasive technique that enables the visualization of the venous pattern in the breasts using a low-risk Class 1 medical device.



Images of a healthy breast

Images of a breast with abnormalities



Luminous Pro-Series

It contains an infrared LED light that adheres to breast tissue, absorbing hemoglobin.

Objective of the Breast Transillumination Exam with Luminous Pro-Series

To complement the clinical breast examination conducted by the healthcare professional.

Testing Location:

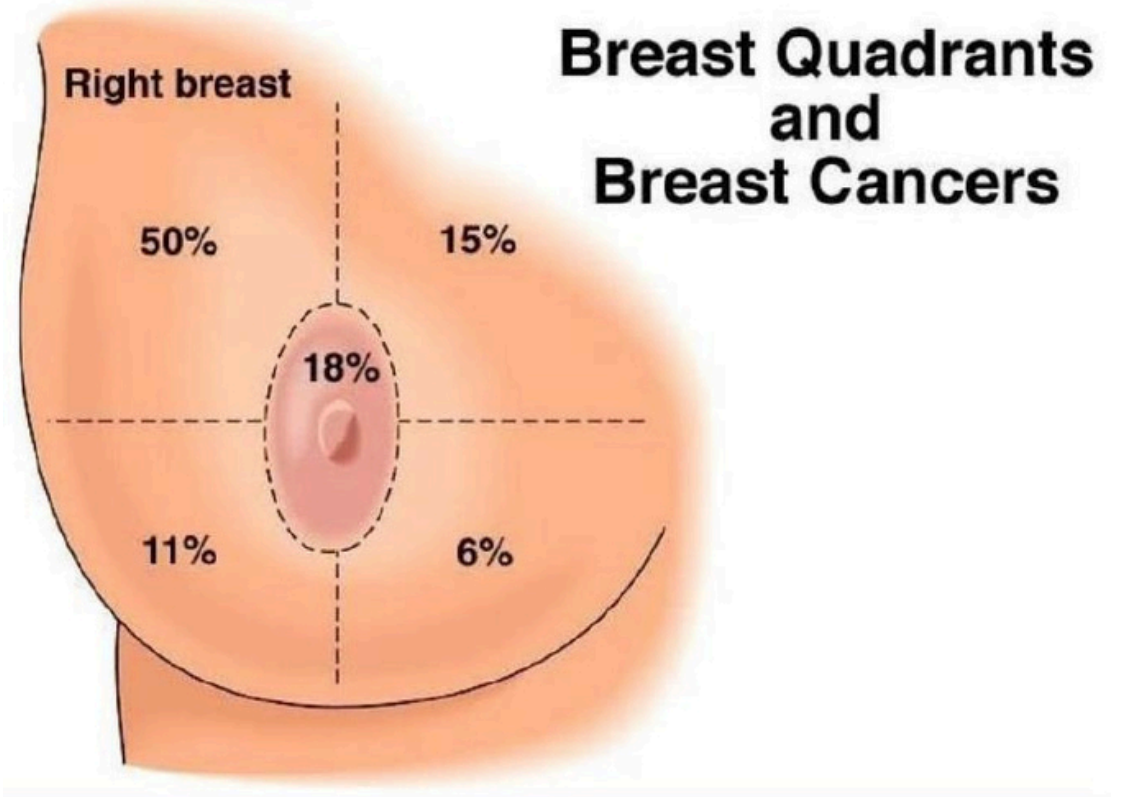
The procedure should be performed in a consultation room or dark room where no sunlight or artificial light can enter.

INSTRUCTIONS FOR USE BY HEALTHCARE PROFESSIONALS

The patient is positioned standing with her hands behind her head (at the nape) similar to the ECM (Clinical Examination Method).

The Luminous Pro-Series medical device is placed on the breasts, with the disc adhered to the right breast, mentally dividing the breast into four quadrants.

Byer/Shainberg/Galliano *Dimensions Of Human Sexuality*, 5e. Copyright © 1996. The McGraw-Hill Companies, Inc. All Rights Reserved.



INSTRUCTIONS FOR USE BY HEALTHCARE PROFESSIONALS

- We begin with the Upper Outer Quadrant and screen down to the tail of Spencer (axillary end).
- Next, we will screen the Upper Inner Quadrant, followed by the Lower Inner and Outer Quadrants.
- Finally, the Luminous Pro-Series device is placed beneath the nipple, providing a comprehensive view of the breasts.

RESULTS

- Breasts without angiogenesis will appear as bright red light with regular blood vessels.
- Breasts with any suspicion of pathology will show irregular dark spots.
- Preclinical diagnosis.
- It is recommended that any patient presenting abnormal venous patterns be referred for ultrasound and/or mammography.